

# Rationale For **DentaTreat**<sup>TM</sup>

Patent Pending

At least 80% of dogs and 60% of cats have gingivitis, periodontitis, or tooth decay. Tooth health is dependant upon the outcome of a constant battle taking place in the mouth between micro-organisms, diet, minerals, tooth morphology, salivary flow, and acid-base balance.



## **PURPOSE:**

To aid in maintaining pet oral health, utilizing the scientifically-proven beneficial properties of cheeses, probiotics, minerals, and other natural ingredients.

## **INGREDIENTS:**

A special blend of Dental-Active Natural Cheeses, Trona Minerals, Calcium Lactate, Aloe Vera, Potassium Citrate, Direct Fed Microbe Cultures (Enterococcus faecium, Lactobacillus acidophilus, bifidus, and salivarius), Milk Calcium, Apple Polyphenols, Natural Enzymes, Wysong Whole Salt<sup>TM</sup>, Fructooligosaccharides, Chromium Yeast, Isolated Milk Proteins (including Lactoferrin and Lactoperoxidase).

## **DIRECTIONS:**

Sprinkle atop one or more meals daily, using enough to cover the food. DentaTreat<sup>TM</sup> can also be mixed with a small amount of water to form a paste that can be fed to your pet, or applied directly to the teeth.

For best results, use in conjunction with the entire Wysong Optimal Health Program for Animals.



## **The Problem**

Proper management of pet health begins with understanding the causes of potential problems. When certain foods are deposited on teeth, a microenvironment is created conducive to the formation of calculus, or plaque as it is also known. Sugars (carbohydrates) within plaque create acids that strip calcium and phosphorus from the tooth. This softens the tooth, allowing for development of cavities (dental caries). Plaque at the gum-tooth interface encourages bacterial growth, inflammation, gum recession (periodontitis), alveolar bone disintegration and tooth loss. Chronic infection in the mouth can also systemically seed infection elsewhere in the body including kidneys, blood vessels, heart and joints.

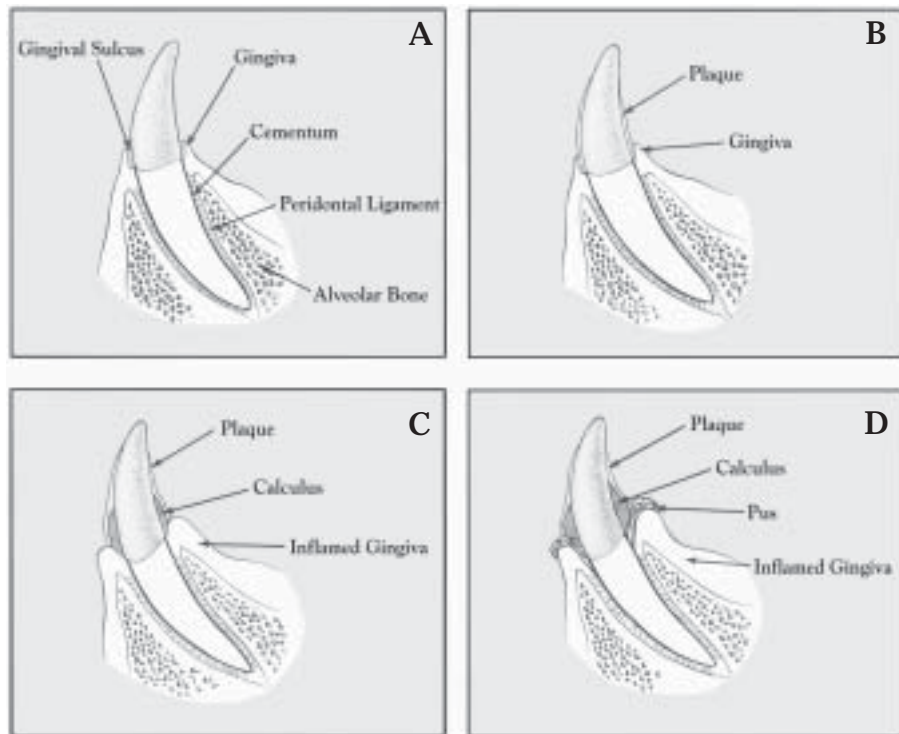
## **Prevention**

The basis of prevention is good nutrition. Modern pet food emphasis on processed, fractionated, refined, dead, devitalized, carbohydrate-based foods takes its toll on health in many ways. (For a full understanding of the fallacy and hazards of "100% complete" pet foods, see "The Wysong Optimal Health Program for Animals," page 5, and [The Truth About Pet Foods](#), page 5-6.) Researchers have found that cooked starches, which are major components of processed pet foods, remain longer in the mouth, increasing the amount of time cariogenic bacteria can feed on them. Such foods also easily create sticky mouth residue regardless of their crunchy "dental preventive" design. Pets are not chewers, but rather chunk swallows and thus even if the food were filled with hundreds of tiny toothbrushes, the only effect would be a scrubbed stomach.

The Wysong Optimal Health Program advocates feeding a variety of fresh, whole foods (see page 5). This helps ensure that your pet is getting the right amounts and combinations of nutrients and textures to establish good health, both internally and externally.

Far better than any clever carbohydrate-based processed invention are the foods that have maintained animal dental health for eons. Raw bones are the perfect nutritious dentifrice and should be a part of every pet's diet. Large beef knuckle-bones for dogs, and chicken wings and necks for cats and puppies are far superior to any fabricated food.

## PERIODONTAL DISEASE IN PETS



**A.** The healthy tooth. The tissues supporting the tooth in the alveolar socket are the gingiva, cementum, periodontal ligament, and alveolar bone. **B.** The components of plaque include mucin from saliva, exfoliated epithelial cells, food particles, and bacteria. **C.** Calculus or tartar is mineralized plaque. It is irritating to the gingival tissue. Inflammation of these tissues changes the pH of the oral cavity, facilitating the survival of pathogenic bacteria. Swollen, edematous gums serve as a nidus for infection, trapping bacteria under the gum line. **D.** The bacteria, their toxins, and neutrophils accumulate, forming a pocket of pus. This leads to detachment of the gingiva from the tooth. Figure 1.

(Caution: cooked bones can splinter, as well as cause constipation since they can easily be consumed in excess.)

### A Word about Acidemia

Modern companion animal diets have a tendency to cause systemic acidemia. This acidic environment of the body promotes the growth of disease-causing organisms, the loss of minerals from bones and teeth, and also stimulates the precipitation of tartar on the teeth. The mere fact that tartar is being deposited on the teeth is evidence that the body is too acidic. The solution is to modify the diet to its more natural, whole, raw form. This, in combination with a constant supply of pure water rejuvenated with Wysong Well-Spring™, will help alkalinize the body and promote the growth of friendly probiotics that suppress pathogens. (For a detailed discussion of systemic

acidemia and its insidious health consequences, see “Healthy Water Products.”)

### An Entirely Different Pet Snack

Wysong DentaTreat™ is an aid to maintaining pet oral health, utilizing the beneficial properties of cheeses, probiotics, minerals and other natural ingredients.

Certain **cheeses** have unique properties which help prevent tooth decay. First, the alkaline nature of these cheeses buffers the acidity of plaque and raises pH to neutralize tooth-destroying acids. Second, salivary flow is increased, thereby diluting and clearing sugars from the oral cavity. Finally, cheese proteins impede demineralization of tooth enamel and aid in remineralization, resulting in retained or regained enamel hardness.

The major **minerals** involved in tooth enamel and pulp dentin biology are calcium and phosphorus. Calcium is necessary for enamel hardness and can move into and out of tooth cells. When cheese is eaten, the salivary concentration of calcium ions available for depositing in the enamel increases, resulting in remineralization of the enamel. Phosphates also aid in remineralization by binding to the tooth surface, thereby inhibiting the binding of damaging acidic compounds.

**Trona mineral salts** have antibacterial properties and are highly effective natural agents in removing dental plaque. Trona minerals are also known to inhibit the cariogenic bacterium *Streptococcus sobrinus* by 68%. Additionally, these alkaline minerals function to neutralize acids in the mouth, thus preventing erosion. Research has shown that such salts are significantly more effective than toothpastes which contain other abrasives.

**Calcium lactate** has been shown to have plaque reducing properties and is effective in reducing demineralization and erosion.

**Probiotic cultures and enzymes** provide many internal benefits which have been described at great length in other publications (see “Wysong Probiotics and Enzymes”), and also offer benefits specific to dental health. One action is to reduce the number of putrefactive bacteria responsible for bad breath. The probiotic *Lactobacillus acidophilus* aids in optimizing calcium metabolism and produces the amino acid L-lysine, which has been linked to limiting tooth decay. DentaTreat also provides important **prebiotic oligosaccharides**, which function to nourish the beneficial active probiotics.

**Apple polyphenols** in DentaTreat prevent the attachment of *S. sobrinus* to tooth surfaces, thus inhibiting its

production of glucans and other cariogenic factors. This antibacterial function has been shown to lead to the prevention of tooth demineralization and dental caries. Polyphenols derived from apples have also been shown in clinical studies to be 2-3 times as effective as parsley seed oil in eliminating bad breath by inhibiting production of methylmercaptan by certain bacteria by up to 80%.

Wysong DentaTreat is made entirely of safe, natural food ingredients and has no artificial colorings or flavors.

Wysong DentaTreat is intended to be a delicious treat for dogs and cats, and can be fed as a treat on a daily basis. Sprinkle atop one or more meals daily, using enough to cover the food.

DentaTreat can also be mixed with a small amount of water to form a paste that can be fed to your pet, or applied directly to the teeth.

For greatest health, use in conjunction with the entire Wysong Optimal Health Program for Animals (see page 5), which includes supplements, rotating through the various diets, and whole fresh foods to provide healthy variety.

---

*These statements have not been evaluated by the Food and Drug Administration. This product is not intended to diagnose, treat, cure, or prevent any disease.*

### **Diet-Related Tooth Alignment**



*Tooth alignment in a cat raised on a natural, raw meat-based diet.*



*Severe tooth malalignment in a cat raised on processed food.*

Figure 2.

- Almarza de Ortega D. Xylitol: A sugar to reduce tooth decay. *Invest Clin.* 30(3):125-7. 1989.
- Amaechi BT, et al. Caries inhibiting and remineralizing effect of xylitol *in vitro*. *J Oral Sci.* 41(2):71-6. 1999.
- Bar A. Caries prevention with xylitol. *Wld Rev Nutr Diet.* 55:182. 1988.
- Barnes D, et al. Field trial of preventative regimes in Thailand and French Polynesia. *Int Dent J.* 35:66. 1985.
- Beiraghi S, et al. Effect of calcium lactate in erosion and *S. mutans* in rats when added to Coca-Cola™. *Pediatr Dent.* 11(4):312-5. 1989.
- Brudevold F, et al. Effects of some salts of calcium, sodium, potassium and strontium on intraoral enamel demineralization. *J Dent Res.* 64:24. 1985.
- Chandan RC. Enhancing market value of milk by adding cultures. *J Dairy Sci.* 82(10):2245-56. 1999.
- Edgar WM, et al. Effect of sequence of food intake on plaque pH. *Amer Dental Health Found.* 1:280. 1981.
- Eisner ER. Periodontal disease in pets: The pathogenesis of a preventable problem. *Veterinary Medicine.* 97-104. 1989.
- Featherstone JD, et al. An *in situ* model for simultaneous assessment of inhibition of demineralization and enhancement of remineralization. *J Dent Res.* 71(-HD-):804-10. 1992.
- Gedalia I, et al. Tooth enamel softening with a cola type drink and rehardening with hard cheese stimulated saliva *in situ*. *J Oral Rehabil.* 18(6):501-6. 1991.
- Gedalia I, et al. Effect of hard cheese exposure, with and without flouride prerinse, on the rehardening of softened human enamel. *Caries Res.* 26(4):290-2. 1992.
- Gedalia I, et al. Fluoride and hard cheese exposure on etched enamel in neck-irradiated patients *in situ*. *J Dent.* 24(5):365-8. 1996.
- Geddes DA. Teeth for the future. *Acta Paediatr Scand Suppl.* 373:53-7. 1991.
- Greahn G. Acid erosions of tooth surface. 3. Prevention and therapy. *Dtsch Stomatol.* 41(12):505-7. 1991.
- Hefferen JJ, et al. Foods, Nutrition and Dental Health, Volume 1. Pathotox Publishers, Inc. Park Forest South, IL. 1981.
- Herod EL. The effect of cheese on dental caries: A review of the literature. *Aust Dent J.* 36(2):120-5. 1991.
- Jenkins GN, et al. Effect of eating cheese on Ca and P concentrations of whole mouth saliva and pH. *Caries Res.* 23(3):159-64. 1989.
- Jensen ME, et al. Effects of processed cheese on human plaque pH and demineralization and remineralization. *Amer J Dent.* 3(5):217-23. 1990.
- Jensen ME. Diet and dental caries. *Dent Clin North Am.* 43(4):615-33. 1999.
- Kandelman D, et al. Clinical results after 12 months from a study of the incidence and progression of dental caries in relation to consumption of chewing gum containing xylitol in school preventative programs. *J Dent Res.* 55:1407. 1987.
- Kashket S, et al. Effectiveness of calcium lactate added to food in reducing intraoral demineralization of enamel. *Carie Res.* 31(6):429-33. 1997.
- Kaup SM, et al. Bioavailability of calcium in yogurt. *Milchweissenschaft.* 42:513-16. 1987.
- Legier-Vargas K, et al. Effects of sodium bicarbonate dentifrices on the levels of cariogenic bacteria in saliva. *Caries Res.* 29(2):143-7. 1995.
- Levine J, et al. Diet, chew toys and the health of the oral cavity. *Vet Forum.* 1994.
- Lewinsein I, et al. Enamel rehardening by soft cheeses. *Am J Dent.* 6(1):46-8. 1993.
- Makinen KK. Possible mechanisms for the cariostatic effect of xylitol. *Int Z Vitam Ernahrungsforsch Beih.* 15(-HD-):368-80. 1976.
- Mankotis S, et al. Evaluation of the effects of brushing on the removal of dental plaque. *J Clin Dent.* 9(3):57-60. 1998.
- Moynihan PJ, et al. The cariostatic potential of cheese: Cooked cheese-containing meals increase plaque calcium concentration. *British Dental J.* 187(12):664. 1999.
- Navia JM. Carbohydrates and dental health. *Am J Clin Nutr.* 59(suppl):719-27S. 1994.
- Papas AS, et al. Dietary models for root caries. *Amer J Clin Nutr.* 61(2):418S. 1995.
- Pepper T, et al. Xylitol in sugar-free confections: The naturally occurring sugar alcohol helps prevent cavities and provides a refreshing taste. *Food Technol.* 42(10):98. 1988.
- Pottenger FM. Pottenger's Cats: A Study in Nutrition. Price-Pottenger Nutrition Foundation, Inc. La Mesa, CA. 1983.
- Rapoport L, et al. Treatment of oral ulceration with *Lactobacillus* tablets. *Oral Surgery, Oral Medicine, and Oral Pathology.* 20:591-593. 1965.
- Rosen S, et al. Effect of cheese, with and without sucrose, on dental caries and recovery of *Streptococcus mutans* in rats. *J Dent Res.* 63(6):894-5. 1984.
- Sands DC, et al. Fortification of foods by fermentation with lysine-excreting mutants of *Lactobacilli*. *J Ag Food Chem* 24-6:1104. 1967.
- Sato, et al. Flavones with antibacterial activity against cariogenic bacteria. *J Ethnopharmacology.* 54:171-6. 1996.
- Schaeken MJ, et al. Control of calculus formation by a dentifrice containing calcium lactate. *Carie Res.* 27(4):277-9. 1993.
- Scheinin A, et al. Turku sugar studies. V. Final report on the effect of sucrose, fructose and xylitol diets on the caries incidence in man. *Acta Odont Scand.* 33(Suppl 70):67. 1975.
- Scheinin A, et al. Xylitol-induced changes of enamel hardness in the human mouth. *J Dent Res.* 60(Suppl A):514. 1981.
- Scheinin A, et al. Xylitol and caries: The collaborative WHO oral disease preventive programme in Hungary. *Int Dent J.* 35(1):50-7. 1985.
- Scheinin A. Xulitol-induced changes of enamel microhardness paralleled by microradiographic observations. *Act Odontol Scand.* 51(4):241-6. 1993.
- Schneider HG, et al. Reduction of dental plaque by apples and chewing gum. *Nahrung.* 30(9):907-12. 1986.
- Science News.* 134(14):218. 1988.
- Sela M, et al. Enamel rehardening with cheese in irradiated patients. *Am J Dent.* 7(3):134-6. 1994.
- Shklair IL. A nutritional survey of caries-free Naval recruits. *Amer Dental Health Found.* 1:237. 1981.
- Shrestha B, et al. Preliminary studies on calcium lactate as an anticaries food additive. *Caries Research.* 16:12. 1982.
- Silva, et al. Effects of water-soluble components of cheese on experimental caries in humans. *J Dent Res.* 66(1):38-41. 1987.
- Silva, et al. Effects of cheese extract and its fractions on enamel demineralization *in vitro* and *in vivo* in humans. *J Dent Res.* 66(10):152-7. 1987.
- Soderling E, et al. Long-term xylitol consumption and *mutans streptococci* in plaque and saliva. *Caries Res.* 25(2):153-7. 1991.
- Steinberb LM, et al. Remineralizing potential, antiplaque and antigingivitis. *Clin Prev Dent.* 14(5):31-4. 1992.
- Steinman RR. Nutrition of the teeth and dental caries. *J Appl Nutr.* 39(1):42-45. 1987.
- Svenson D, et al. Xylitol: The sugar that prevents tooth decay. *Dent Hyg (Chic).* 51(9):401. 1977.
- Tanzer JM, et al. Bicarbonate-based powder and paste dentifrice effects on caries. *Clin Prev Dent.* 12(1):18-21. 1990.
- Tanzer JM. Xylitol chewing gum and dental caries. *Int Dental J.* 54(1 Suppl 1):65-76. 1995.
- Taylor KG. Potential anti-caries agents. *Crisp Data Base National Institutes of Health.*
- Toukairin T, et al. New polyphenolic 5'-nucleotidase inhibitors isolated from the wine grape "Koshu" and their biological effects. *Chem Pharm Bull (Tokyo).* 39(6):1480-3. 1983.
- Tsuchiya H, et al. Inhibition of the growth of cariogenic bacteria *in vitro* by plant flavones. *Experientia.* 50:846-9. 1994.
- Vincent JG, et al. Antibacterial activity associated with *Lactobacillus acidophilus*. *J Bact.* 78:477-484. 1959.
- Wysong RL. Rationale for Animal Nutrition. Inquiry Press. Midland, MI. 1993.
- Wysong RL. "Probiotics and Enzymes." Midland, MI. 2000.
- Wysong RL. "Rationale for WellSpring & Alkinate." Midland, MI. 2000.
- Wysong RL. "The Truth About Pet Foods." Midland, MI. 2000.

7550 Eastman Avenue  
Midland, MI 48642  
www.wysong.net  
wysong@wysong.net